

Operating Instructions

Parts List



Semi-Electric Stacker

SES Series

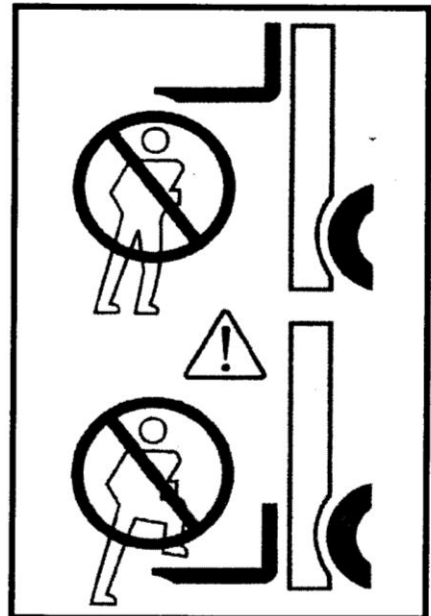
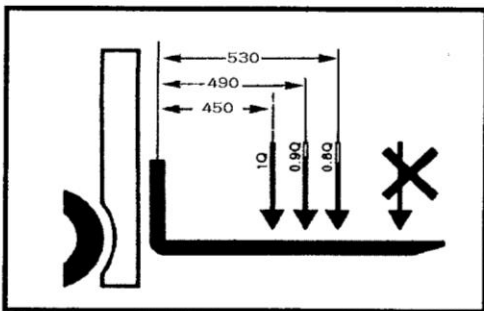
Note: Operator MUST read and understand this operating instructions before use this Electric Forklift Truck.

⚠ WARNING:

1. The forks must not be lifted more than maximum 300mm during driving.
2. Goods should be put on the forks evenly and never overload. Uneven loading not only damages stacker but also causes upsetting.
3. forbid to stand both sides of the carriage welded when it is working.

⚠ WARNING:

1. The stacker is intended for use on plane and level floors.
2. Pay attention to the obstacle when moving at the slope.



I PREFACE

Read this manual carefully before the machine is taken into use to avoid errors. Correct operations and regular inspections are factors of vital importance for the operating economy and lifetime of the machine.

These important aspects are described in the following related sections.

All the information contained in this manual is based on the data available at the time of printing, the manufacturer reserves the right to modify its products at any time, without notice and without liability. It is therefore advisable to regularly check for any changes. The manufacturers shall not be held liable in case of faults or accidents due to negligence, incapacity, installation by unqualified technicians and improper use of the electric forklift truck.

II APPLICATION

The SES series semi-electric stacker are designed for stacking and short distance transport applications and intended for use on plane and level floors.

III THCHNICAL SPECIFICATIONS

Technical specifications and major dimensions are shown in FIGURE 1 and Table 1, respectively.

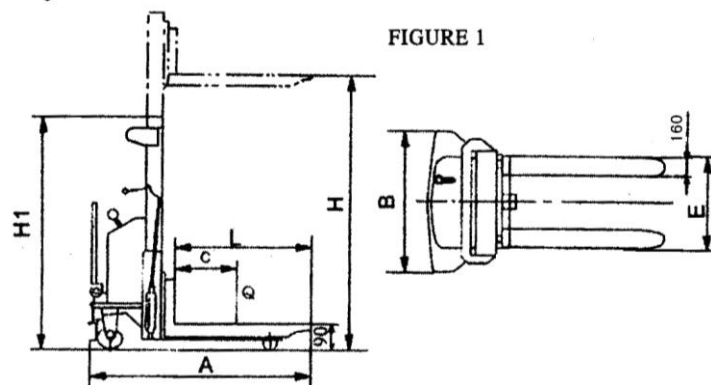


Table1

Model No.		SES1016	SES1020	SES1025	SES1030	SES1035	SES1516	SES1520	SES1525	SES1530	SES1535	
Rated Capacity Q	kg	1000					1500					
Lifting Height H		1600	2000	2500	3000	3500	1600	2000	2500	3000	3500	
Fork Length L		1000 / 1100 / 1150										
Fork Width E	mm	550										
Load Center C		450										
Turning Radius		1340					1350					
Lifting Motor	V/kw	12 / 1.5					12 / 2.5					
Battery	V/Ah	12V / 120~130Ah					12V/ 150Ah					
Charger	V/A	12 / 15										
Overall Length A		1580 / 1680 / 1730										
Overall Width B	Mm	810										
Overall Height H ₁		2035	1585	1840	2080	2330	2035	1585	1840	2080	2330	
Net Weight	Kg	340	376	392	415	432	350	397	417	436	456	

IV OPERATING GUIDE

PRE-SERVICE CHECK

1. If the stacker has been damaged during transport, it must not be put into service and you should immediately contact your dealer.
2. The stacker has been lubricated before delivery, and the hydraulic unit has been filled with hydraulic oil.
3. If a battery has been supplied with the stacker, the battery is charged.
4. If a charger has been supplied with the stacker, it should be installed as soon as possible in order that the battery can be charged when necessary.

OPERATION OF STACKER

1. Turn the key and switch on, the display indicator shows, Pull the valve handle backwards towards the driver to lift the forks.
2. Push the valve handle forwards to lower the forks.
3. The valve handle is spring loaded and returns automatically to neutral position.
4. The stacker is intended for use on plane level floors. During driving the forks must not be lifted more than maximum 300mm.
5. When stacking with lifted forks, driving should be slow and over the shortest possible distance due to the stability.
6. Goods should be placed on the forks uniformly and never overload. Uneven loading not only damages stacker but causes upsetting.
7. Heavy should not be allowed to remain on the forks for a long time after operation is over.
8. Forbid to haul or lay the stacker on the slope.
9. The truck must always be used or parked shelter form rain and snow and in no case must it be used in very damp areas.

BATTERY CHARGING

1. Turn the key and switch on, when the display indicated voltage is below 11 volt or the red-light show with the buzz, please charge up the battery.
2. The rated specification of the battery charger supplied:
Input: 220V AC50/60Hz
Output: 12V DC 15A
3. When start charging, insert the output plug of the charger to the charging socket of the stacker first, then the input plug of the charger to the socket of AC power supply. Turn on the charger switch, battery charging is started with indicator (red lamp) lights up. Normal recharging lasts about 10 hours. When charge is finished, the AC supply should be cut off. It is advisable to recharge the battery after each days work.
4. Battery charging should be done in a well ventilated place and there is no naked flames, no sparks and no heat radiation sources nearby.
5. Make sure the level of the electrolyte is above the lower line. If the elements are not covered, top up with distilled water. Under normal conditions topping up can be generally done a month.

V MAINTENANCE GUIDE

CONTROL CHECK

Preventive overhaul based on regular checks of the machine will limit wear, and possible defects may be corrected before serious breakdowns take place. Careful maintenance reduces repair costs and standstills.

DAILY CHECK

1. Check that the battery is fully charged (see also the section of the battery).
2. Lift the carriage to its top position to check that there is enough hydraulic oil in the system. Refill if necessary with YA-N32 or a similar oil.

WEEKLY CHECK

The user of the stacker should spend a few minutes every week on cleaning. Special attention should be paid to the wheels and axles, see if there is thread, rags and the like blocked on.

HALF-YEAR CHECK

1. Lubricate the lifting chain. If the stacker is working in dust-laden circumstances, it should occasionally be cleaned with an oil-impregnated towel. Check the chain for wear.
2. Check and tighten possible loose screws and nuts and the cable joints of the battery.
3. Check brush wear in the pump motor, and take away possible irregular so that a good contact is maintained.

OIL CHANGE IN THE HYDRAULIC SYSTEM

We recommend to change the hydraulic oil after one month's operation (or 200 hours), and even if the operation time has not reached, change the oil once a year.

Oil change is most easily done in the following way:

Make sure that the carriage is at bottom position.

Dismount the hose at the bottom of the cylinder and place the hose in a container. Activate the lifting handle, the pump starts, and the oil tank will be emptied of oil. Use hydraulic oil YA-N32 or the like. In cold stores where the temperature may be lower we recommend hydraulic oil YH-10. When you have lifted and levered the carriage 2 or 3 times, there is no more air in the system, and the machine will again work normally. If the stacking height has not been obtained it is necessary to refill.

BATTERY MAINTENANCE

The acid level must be checked at least once a week.

Refilling must not take place until charging has been finished, as the acid expands during charging.

Only distilled water can be used for refilling.

The battery surface must be kept clean and dry, as dirt and wet will cause leakage of current and consequently reduced battery capacity. Acid spill can be neutralized with soda solution or diluted ammonia, which is to be washed off with water.

The terminal connections must be firmly tightened and greased with acid free grease which prevents sulphate formations.

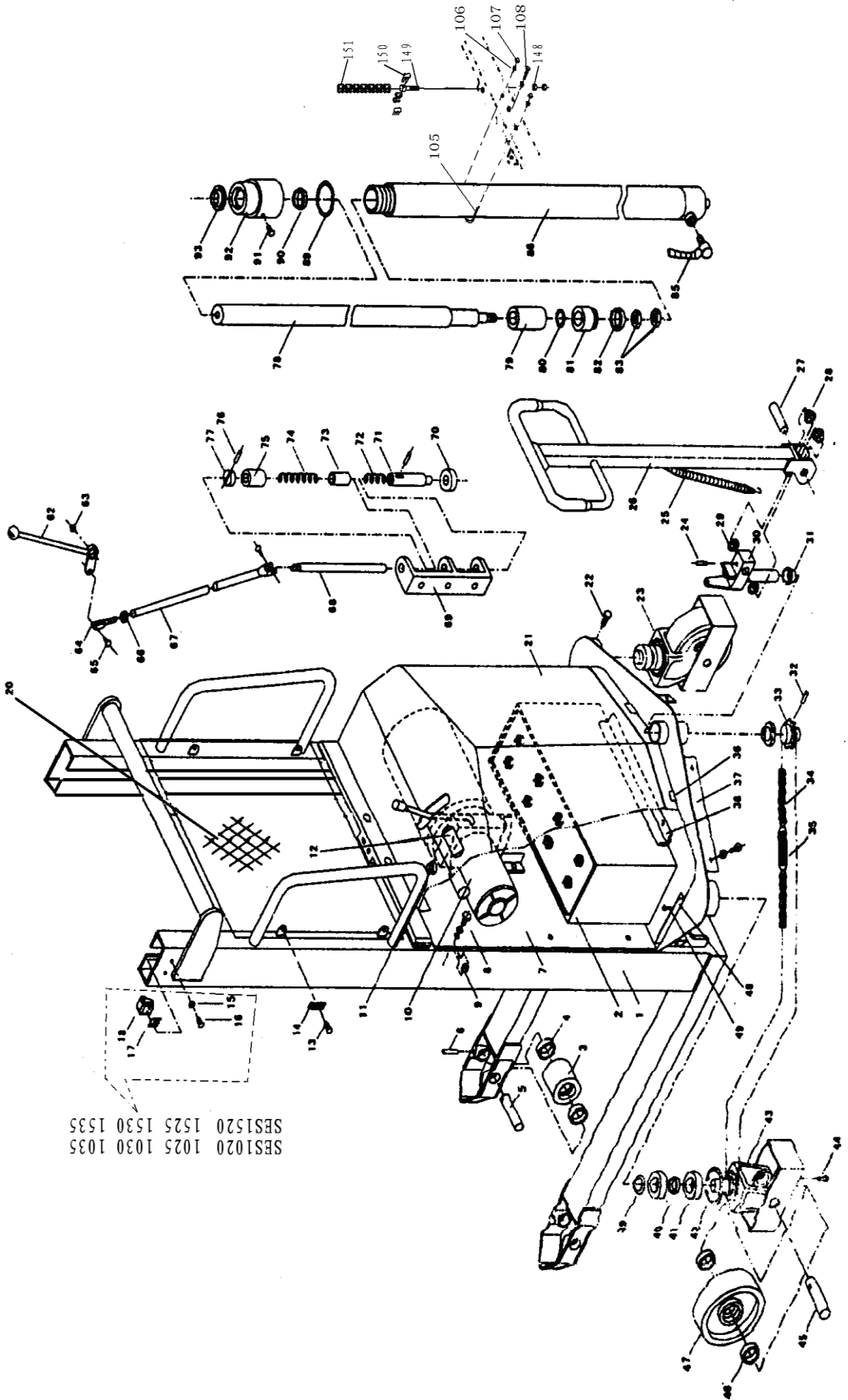
Sulphate coating reduces the contact surface, resulting in a considerable voltage loss.

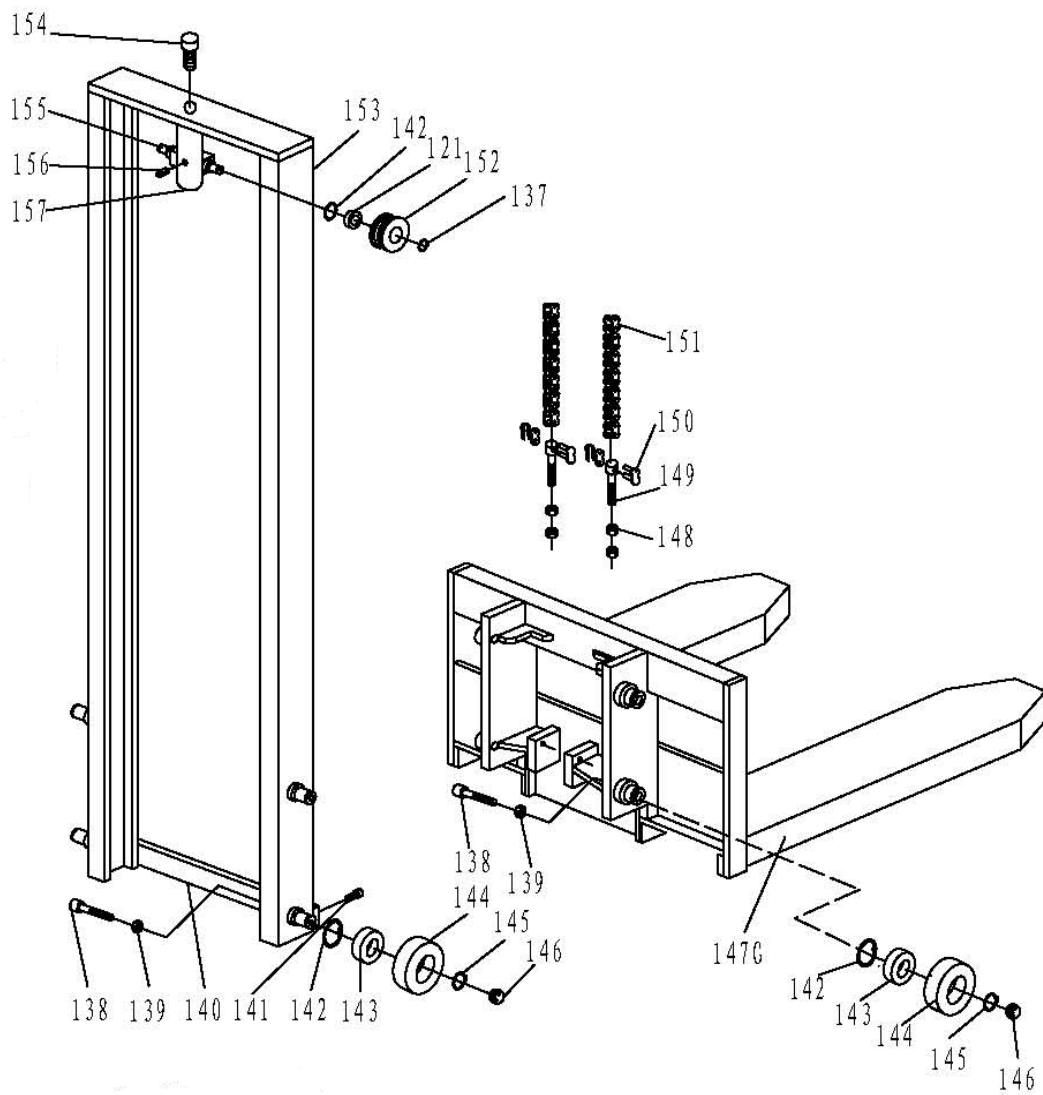
SPARE PARTS LIST

Item	Description	Qty	Item	Description	Qty	Item	Description	Qty
1	Outer mast assembly	1	35	Chain	1	79	Locating sleeve	1
2	Battery	1	36	Clip	8	80	O-seal ring	1
3	Front roller	2	37	Rear cover	2	81	Piston	1
4	Bearing	4	38	Locating piece	6	82	Seal ring	1
5	Axle	2	39	Circlip	1	83	Nut	2
6	Tightening pin	2	40	Spacer	1			
7	Guard board	1	41	Bearing	2	85	Oil hose unit	1
8	Bolt	6	42	Circlip	1	86	Cylinder	1
9	Spacer	6	43	Wheel housing	1	87	Bolt	2
10	Hydraulic power pack	1	44	Screw	1	88	Holding-down clip	2
11	Power switch	1	45	Axle	1	89	O-seal ring	1
12	Voltage display	1	46	Bearing	2	90	Seal ring	1
13	Bolt	6	47	Driving wheel	1	91	Screw	1
14	Spacer	6	48	Locating piece	4	92	Jack cover	1
15	Spacer	2	49	Screw	4	93	Dust seal	1
16	Screw	1						
17	Filling piece	1	62	Handle	1	105	Hoop	1
18	Lateral roller unit	1	63	Nut	1	106	Nut	3
20	Shield	1	64	Joint	1	107	Nut	2
21	Cover	1	65	Bolt	1	108	Bolt	1
22	Screw	1	66	Nut	1			
23	Driven wheel	1	67	Connecting rod	1	148	Nut	4
24	Pin	1	68	Center rod	1	149	Bolt	2
25	Spring	2	69	Connecting seat	1	150	connect	2
26	Handlebar	2	70	Brake shoe	1	151	Chain	2
27	Axle	1	71	Spring socket	1			
28	Bushing	2	72	Spring	1			
29	Spacer	1	73	Spring socket	1			
30	Cast joint seat	1	74	Spring	1			
31	Bushing	2	75	Socket sleeve	1			
32	Tightening pin	2	76	Pin	1			
33	Chain wheel	2	77	Washer	1			
34	Chain adjuster	1	78	Piston rod	1			

SES SERIES SEMI-ELECTRIC STACKER

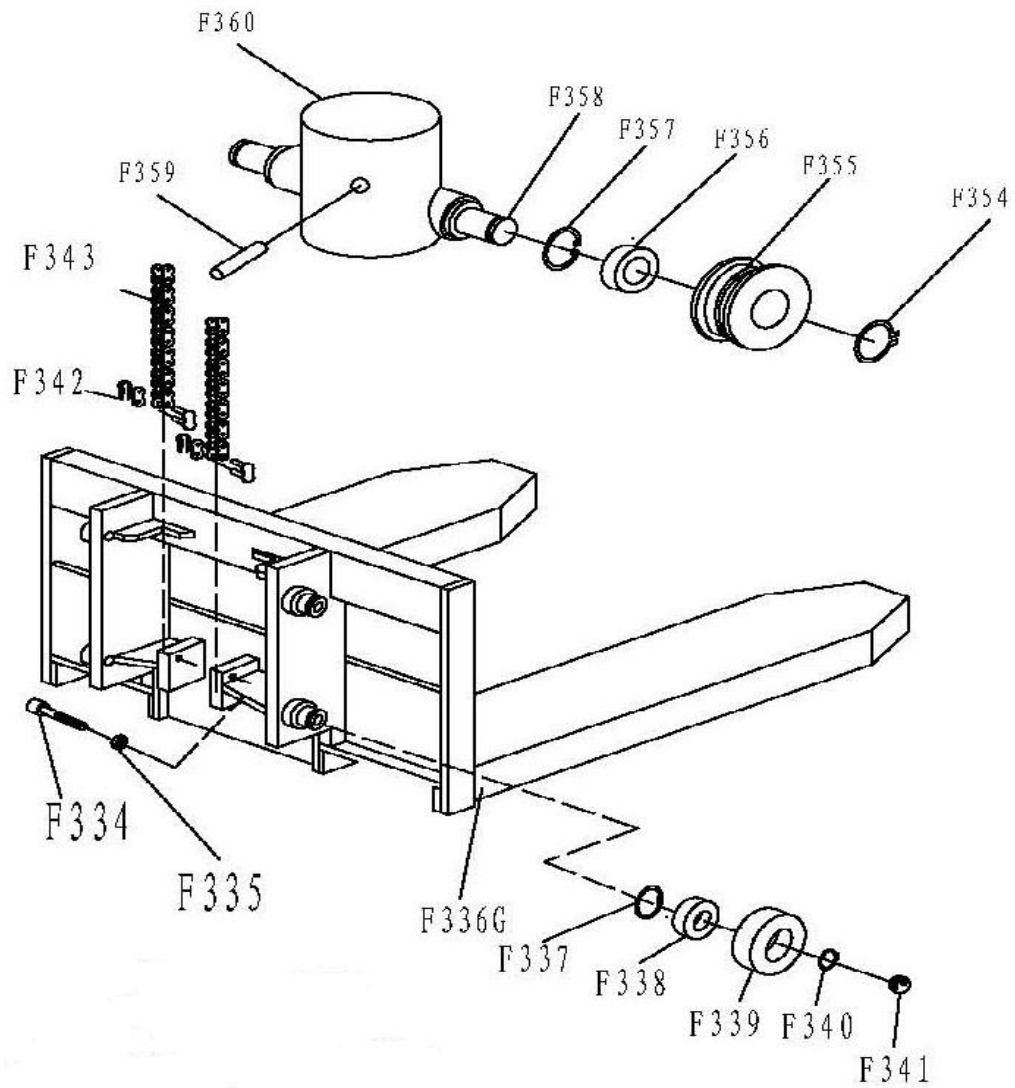
SES1020 1025 1030 1035
 SES1520 1525 1530 1535





Mast Part List for SES1020;1025;1030;1035;1520;1525;1530;1535

No.	Description	Qty.	No.	Description	Qty.
121	Bearing	8	147G	Fixed Fork	4
137	Locking Ring for Axle	14	148	Nut	4
138	Screw	8	149	Bolt	2
139	Nut	8	150	Connect	2
140	Linking Plate	1	151	Chain	2
141	Screw	4	152	Roller for Chain	2
142	Locking Ring for Hole	4	153	Inner Mast	1
143	Bearing	8	154	Screw	4
144	Roller	4	155	Axle	4
145	Locking Ring	8	156	Elastic Pin	1
146	Steel Ball	8	157	Frame	4



Mast Part List for SES1016;1516;

No.	Description	Qty.	No.	Description	Qty.
F334	Bolt	4	F354	Locking Ring	2
F335	Nut	4	F355	Roller for Chain	2
F336	Fork	2	F356	Bearing	2
F337	Locking Ring	4	F357	Locking Ring	2
F338	Bearing	4	F358	Axle	1
F339	Roller	4	F359	Elastic Pin	1
F340	Locking Ring	4	F360	Frame	1
F341	Steel Ball	4			
F342	Connect	2			
F343	Chain	2			